



FROM THE PRESIDENT

It is an honor to serve as the President of the Georgia Watercolor Society. I have served on the Board for the last three years, but have always declined to be considered

for the Presidency, but here I am. How did this happen? As Daryl R. Nicholson, our outgoing president wrote last year, if not me, WHO!!!! But who, ME?

Thanks to Daryl for a job well done during her year as President. Thanks also to Judy Greenberg, Jane Springfield and Beryl Angelus, who each devoted many hours and years of their time to GWS. They are no longer on the Board, but are always willing to help. Thanks, thanks, thanks to all of you for all your hard work and your dedication to GWS.

As we begin a new year, I ask that each member consider strengthening their role as a GWS member and participate to the fullest extent. The society is flourishing, but it takes all of us to make GWS the success that it is now and will be in the future. Something as small as entering your paintings in one of the yearly exhibitions and attending workshops sponsored by GWS. We have two workshops each year and bring in renowned artists to conduct these workshops. This year we have Frank

Francesse for the fall workshop and Don Andrews for the spring workshop. In order to continue to conduct these workshops, we need interest and participation from our members. Supporting our quarterly demonstrations also is important. We have a Plein Air Event in Stone Mountain scheduled for September 26th and hope to see lots of GWS members there. One of the watercolor paintings will win the \$200 prize that GWS is donating for the event. So, let's support our organization this year and every year.

We have an excellent and talented Board this year and a great group of artists in GWS, so let's continue the work that past Boards and Presidents have started and continue to make the Georgia Watercolor Society the best watercolor society in the country. With your help and support, I know we can do it!

Rosie Coleman, President, Georgia Watercolor Society

706-613-1569 lepeep@bellsouth.net

GWS
ANOTHER MILESTONE!
OVER 600 LIKES ON 



Detail from "Kenosha, WI"

IN THIS ISSUE

Page 1 From the President
Page 2 From the Editor
Page 2 Member Event, Paint Out
Page 2 Brush Up on Plein Air
Page 3 2015 Member Exhibition
Page 4 Every Artist Has a Story
Frank Francesse

Page 5 Courage, Facing Show Rejection
Page 6 Day Trips
Page 6 For You Historians
Page 6 Setting Up Your Website Profile
Page 7 All About Our Members
Page 8 Member News
Page 14 Upcoming Exhibitions
Page 14 Officers and Board Members

Hope you are all enjoying this sizzling summer. It is a time to enjoy the long hours of daylight with many outdoor activities. Don't miss the Stone Mountain Park event! Read on for details about the Paint Out and how to register.

The Member Exhibition is about to be unveiled. Remember to check the website to check acceptances. For those who did not get in, be sure to read Marilyn Hughey Phillis', AWS, NWS insightful article "Courage: Facing Show Rejection".

The newsletter is packed with other opportunities to explore and expand. Feed your artistic cravings and plan to attend events and workshops. Enjoy the Member News – looks like many have been busy and thriving!

Welcome to all new members and thanks to everyone for being part of GWS. The help of your talents, experience and expertise is welcome and needed.

We are gathering news for the Fall 2015 issue to be published by the end of October. The deadline for Member News is Friday, October 16, 2015. Put Member News in the subject line. Rosie Coleman is continuing as assistant editor for this section. Please help her out by following the Member News Guidelines printed in each newsletter. Please note her email and home address: Rosie Coleman – lepeep@bellsouth.net; 706-613-1569; 149 Falling Shoals Drive, Athens, GA 30605.

I encourage all members to send suggestions and ideas for your newsletter to me at rsegreti@bellsouth.net.

Rosemary

BRUSH UP ON PLEIN AIR

- 1** Before you go on location the first time do a test painting session in your backyard taking all your equipment with you.
- 2** Team up with a buddy. It is safer and you have someone to watch your set up or loan you whatever you forgot.
- 3** Remember to take drinking water, sunscreen, bug spray and a hat.
- 4** When selecting your subject, consider a close up detail, like a flower or architectural detail instead of trying to paint everything.
- 5** Feel free to move things around for an interesting composition and to change colors. You are making a painting not a photograph.

— *Jane Springfield*

MEMBER EVENT

Fall Paint Out and Board meeting to be held in conjunction with the 2nd Annual Stone Mountain Plein Air Paint Out September 26.

GWS members are invited to participate and compete in the annual Stone Mountain Plein Air Paint Out sponsored by ART Station. The Paint Out takes place in the Village of Stone Mountain and in Stone Mountain Park. This will be the 3rd annual GWS Paint Out and takes the place of our Fall Demo.

DEADLINE TO REGISTER FOR THE EVENT IS SEPTEMBER 4. REGISTRATION REQUIRED!

Go to the ART Station website www.artstation.org for an application. Click on Plein Air on the home page.

GWS members will be extended the ART Station member rate of \$25.00 per person for the event which includes admission to the Park and continental breakfast. Artists will receive a map of the Park, a one-day entry pass and other information. The first 50 registered participants to arrive will also receive a free box lunch.

Registered artists will check in at ART Station beginning at 8:00 am with continental breakfast served from 7:30am. Each artist may submit 2 paintings for professional judging at 3:00 pm. There will be a reception from 4:00 - 6:00 pm where awards will be presented. Paintings will be displayed on artist's own easel. GWS is sponsoring a \$200.00 award for Best Watercolor of the day.

The paintings will be judged by Kippy Hammond, a nationally recognized pastel artist, with prizes ranging from \$200.00 third prize, \$300.00 second prize to the first prize of \$500.00.

The GWS board will meet at ART Station from 10:30am – 12:30pm. Although you are encouraged to come early and paint all day, artists wishing to paint with board members can meet with the board at the end of the meeting. You are also encouraged to bring a friend or fellow member age 18 or older and paint together. Everyone will gather at 3:00pm at ART Station when the paintings are turned in.

Contact Information for ART Station is 770-459-1105, stonemtnpaintout@gmail.com, www.artstation.org

We hope this is the most successful GWS Paint Out ever!



Come to the Mountain for the 2015 MEMBER EXHIBITION AND WORKSHOP

The quaint community of Stone Mountain Village is the site for the GWS 2015 Member Exhibition and Workshop. ART Station (5384 Manor Drive, Stone Mountain, GA 30083) will host the show with the Opening Reception on Saturday, October 3, 6:00 pm - 8:00 pm. Other galleries in the village will be open for an "Art Stroll." Juror Frank Francese will present awards on Saturday, October 24, 11:30 am - 12:30 pm, following his watercolor demonstration at 10:00 am. ART Station Gallery is open Tuesday - Friday, 11:00 am - 5:00 pm, and on Saturday 10:00 am - 5:00 pm. The exhibit runs through November 7, 2015.



**Do not delay in getting your name
on the list by September 15**

for the FRANK FRANCESE WORKSHOP

**Monday, October 19 - Friday, October 23,
9:30 am - 4:30 pm.**

www.georgiawatercolorsociety.com

Participants will have free access to Stone Mountain Park with opportunity to sketch and paint at various locations in the village and in the park. Several hotels located close to the workshop venue and near the historic carving on the mountain will host guests at discounted rates. The workshop site is just outside Park gates. Special passes will be available to participants.

October 3, 6 - 8pm
ART STROLL
ART Station Galleries
at 5384 Manor Drive
and
Center Town Galleries
at 951 Main Street

CALENDAR

MEMBER EXHIBITION AND WORKSHOP

Tues., Sept. 29 - Wed., Sept. 30 1:00 pm - 5:00 pm	Shipped work arrives at ART Station UPS/FedEx
Wed., Sept. 30, 1:00 pm - 3:00 pm	Hand delivered work arrives at ART Station
Saturday, October 3 6:00 pm - 8:00 pm	OPENING RECEPTION & Art Stroll ART Station, Manor Drive, Stone Mtn. Village
Mon., Oct. 19 - Fri., Oct 23 9:30 am - 4:30 pm	WATERCOLOR WORKSHOP with Frank Francese
Saturday, October 24 10:00 am - 11:30 am	FRANK FRANCESE DEMONSTRATION ART Station, Manor Drive, Stone Mtn. Village
Saturday, October 24 1:30 am - 12:30 pm	AWARDS PRESENTATION & RECEPTION ART Station, Manor Drive, Stone Mtn. Village
Sat., Nov. 7, 1:00 pm - 3:00 pm	Pick-up and packing of work for UPS/FedEx



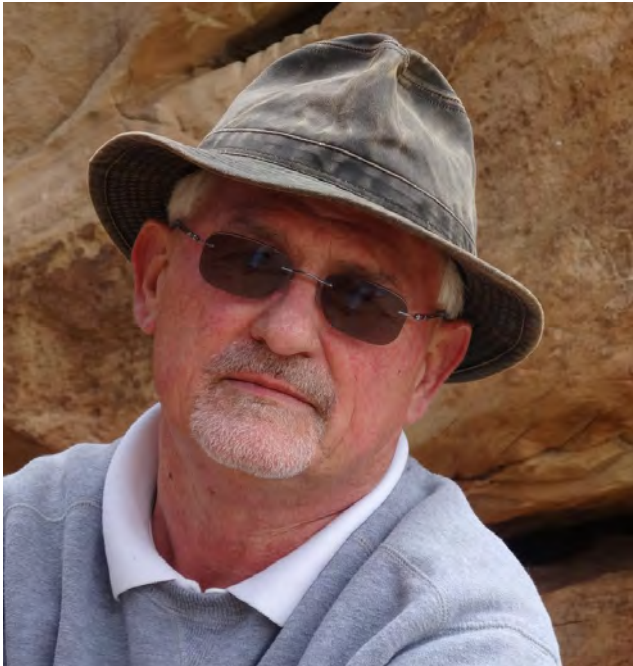
EVERY

Artist

HAS A STORY

AN INTERVIEW

WITH FRANK FRANCESE BY ROSIE COLEMAN



Have you always been an artist?

I painted my first watercolor in 1969. However, I was a carpenter for 25 years to supplement my income.

If you aren't painting, what are your other passions?

Golfing; I was raised in a golfing family, my father and brothers are all Class A PGA pros.

How did you get interested in watercolor?

What are you working on in your own art now? What I work on, in my private time, is the same I teach in my workshops. I work on 5 different subjects; Nature - Country - City - Beach and clouds and sunsets scenes. When I get tired of one subject I move on to the next. I think one should be able to paint subject matter, no matter where you find yourself! This way I do not get bored with my work.

Do you paint in other media or strictly in watercolor?

I paint in watermedia.

Who/what is your inspiration for your paintings?

Life.

How do you obtain your materials/subjects for your paintings?

I travel and sketch while doing so.

Who is your favorite watercolor artist?

Robert E Wood. Why? His use of color.

What can our members expect to learn in your workshop?

To learn to paint quickly, without sketching on watercolor paper.

What are the main reasons for taking a workshop?

One should take workshops to learn another view-point, look at the problems from another angle, but the main thing I stress, in my workshops, is confidence in one's ability to problem solve; painting!

Where is your art currently being shown?

I refuse to deal with any gallery because I cannot justify the 50%- 60% or more that they ask for. Case in point; I was asked to join a gallery and the owner set a price on my work that was correct for his clientele. Then he stated, I have to sell my work anywhere in the States at the same price. I told him thanks but no thanks!!!! Some of the areas I teach, especially in the poorer parts of America, cannot afford those higher prices. I would much rather sell my work for what the area can stand. I want my work in the blue-collar society, as they will appreciate it much more!!! It makes me happy to see a poor person have one of my works...!



"Kenosha, WI"

**Intimidated by sketching?
Frank Francese might be the workshop for you!**



COURAGE: Facing Show Rejection

If you are an artist, sooner or later you will reach a point that you will be urged to enter one of the local, regional or national art competitions. You know that your work is better than it used to be. As you look at your neighbor's efforts, it looks as good or even better than that person's work. In fact, you can proudly say to yourself that you've come a long way in your painting years. You've used all the new techniques and turned out some "pretty damn good stuff". So why not give the next show a try. Show that artist over there that you can be accepted for a show.

Then the notice comes and you see that your work — your beautiful work — was not accepted. How can this be?

Did the Juror have personal favorite artist or themes? WHY? WHY? WHY? You feel hurt, unrecognized, discouraged. Why waste time entering that show or any others? Maybe your work just doesn't measure up to what shows want. You sent in your BEST.

If you want a good answer just hold on to that work for a few years. Now look at it. What have you learned in the meantime? Your original question may have an immediate answer.

Now ask yourself some questions. Did you hold on to the show catalog? Did your work have a subject? How many similar subjects were accepted for the show? Did most of them have a special way of presentation that made them more interesting or memorable than yours? Sometimes a juror has so many entries in a certain category that only a few can be chosen for display or awards. Think of the job of the juror who usually has certain limits for show size, types of work, numbers of work per artist to accept. It is a tough job for both artist and juror.

Now think about yourself, how you were raised? Were you expected to be a winner in all that you did? Was your sibling or friend always better? How important was it for you to be a top achiever in the family? Many of your feelings about competitions go back to very early childhood years. Get over it? Grow up? OK, it is HARD. You will gain a lot of maturity if you try to look at rejections from a less emotional standpoint. You will grow and you will try harder to improve. You will look for opportunities to learn new ways of thinking and doing.

We have all been rejected along this challenging art path. Some well known artists have developed a humor-

ous approach by saving their letters of non-acceptance or cards of REJECTION and put them on display. An occasional laugh at times is a great balm. Don't let rejection stop you. Keep on painting.

A worthy work for a show makes a statement that a juror or viewer will remember. It speaks from the soul of the artist to the soul of the viewer and finds a place to reside there. If your work can do that, your painting is indeed worthy of acceptance.

For those of you who have the responsibility of choosing a juror, do your best to find an impartial and experienced juror. Try not to choose one who does paintings that reflect what YOU like. He or she may surprise you with quite an independent viewpoint. He or she may select work quite unlike what you would expect.

If you have won awards in numerous shows, don't expect the juror to be aware of that or even be impressed if the juror does know. You want a juror to have an intelligent open mind in making selections and even more so in choosing awards.

No one is perfect, but both submitting artists and jurors try to do their best. KEEP TRYING!!! KEEP GROWING!!! KEEP IMPROVING!!!

— Marilyn Hughey Phillis, AWS, NWS
Juror, Experienced WINNER & LOSER

QUOTE TO PAINT BY:

To be a good painter takes two things. First, a creative and personal uniqueness of vision. This requires that we reach inside to find what is distinct about ourselves, what we have to say that is different. This has nothing to do with a subject we are painting, but it is the way we see and feel about a theme. Second, the craft. Craft follows expression, but we must have the tools to let the expression easily flow.

— Stephen Quiller



DAY TRIP

Andrew Wyeth Watercolors



Andrew Wyeth, "Whale Rib"

If you are up for a day trip before the summer is over, hop over to Greenville, South Carolina at the



Greenville County Museum of Art before September 20, 2015 and soak in the dry brush mastery of iconic American artist Andrew Wyeth at the Greenville Collection. For more information please visit <http://gcma.org/andrew-wyeth/>

For You Historians



Any member interested in GWS history or looking for a particular society fact that is not found on our website may visit the University of West Georgia Special Collections site of the Ingram Library:

<http://uwg.galileo.usg.edu/uwg/view?docId=ead/MS-0036-ead.xml>

The Georgia Watercolor Society has been archiving our history at the University of West Georgia in Carrollton, GA and the library has recently added GWS to their website providing public access to the list of items archived.

— Kathy A Kitz
GWS Historian



Have you Set Up Your Website Profile?

1 Sign in to the site at <http://www.georgiawatercolorociety.com>. At the top of the home page enter your full email address in the first box to the left of Member Login and enter the initial password 'GWSmember' in the second box to the left of Member Login. Click 'Member Login'.



2 Once you are signed in, select 'Edit Your Profile' at the top and update your information, including your bio. Click "Update Profile" to save it.

3 Change your password at the bottom and record for your future changes. Again click "Update Profile."

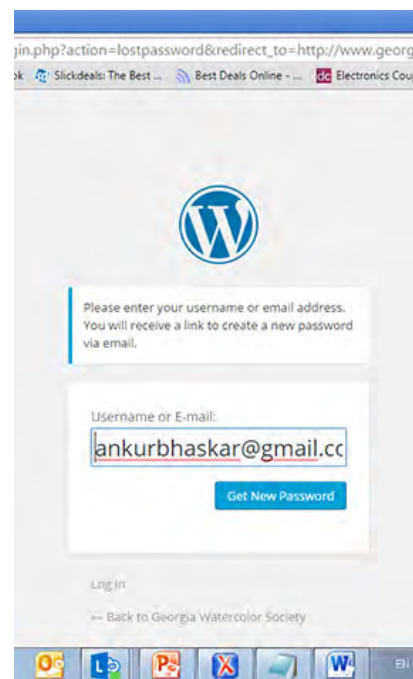
4 If you have already done this but forgot your password, click "Forgot password or user name?"

5 When prompted, enter your email address and click on "Get New Password".

6 You will be getting email with the link to reset your password. Click on that link.

7 You will be asked to enter a new password on the next screen. Enter a new password and click on "Reset Password."

8 Now you can log in with your new password using member login on top of the webpage as in Step 1. Your email address is your user ID (which cannot be changed).



All About Our Members

GWS membership is currently at 467 members. The Board encourages member input and action. Feel free to reach out to any board member listed on the last page of the newsletter and make suggestions.

Membership at a glance:

92 Life Signature Members	83 Associates
17 Life Exhibitors	6 Family
17 Life Associates	30 Honorary
123 Signature	50 Students
49 Exhibitors	

Welcome New Members

Paul L Andino, Stockbridge, GA
Margaret Caudle, Canton, GA
Carol Croop, Atlanta GA
Ryan Fox, Raleigh, NC
Deborah Jinkins, Louisville, KY
Mitzi Rothman, Decatur, GA
Carolyn Suwyn, Decatur, GA
Deborah Wicks, Venice, FL

QUOTES TO PAINT BY:

Watercolour often surprises. It is not an exact science. The artist sets the painting in motion, but the outcome is not certain. The watercolour takes on a life of its own and anything can happen. Sometimes the result surpasses the artist's hopes, but there is also the risk of failure – this is all part of the thrill.

— Hazel Soan

I think you should not only admire, but also learn from painters who don't paint or think like you.

— Charles Reid

PLEASE NOTE

Member News Guidelines

We try to print what you write, but we do condense lengthy entries. Please read the Member News and write your items in the same format. Use third person and be sure to have exact and complete information about the exhibition, correct title of venue, full name of organizations, name of award, dates of workshops etc. Double check your facts! Send text in Arial font, 12 type size. We do not include acceptances into and awards for GWS National or Members shows as there would be far too many to publish. We welcome jpegs of your work and include as many as we can in the newsletter.

SPECIAL NOTE: Please do not refer us to a website, press release or newsletter to get your news. We do not have time to track down information from those sources. **To emphasize: Write your news item in the Member News format you see in the newsletter.**

The deadline for the Fall 2015 GWS Newsletter Member News is Friday, October 16. The newsletter will be published by the end of October. Please put GWS Member News in the subject line. If you have any questions about the format, send an email to: lepeep@bellsouth.net. **For those who mail items, send to Rosie Coleman, 149 Falling Shoals Dr., Athens, GA 30605.** Thanks!

— Rosemary Segreti, Editor, GWS Newsletter



Member

NEWS



Gloria Baker, "Mission of Peace"

Gloria Baker received the "Guerilla Paint Award Gift Certificate" in the "Missouri Watercolor Society's 2015 International Juried Exhibit". The painting is titled "Mission of Peace."

On June 6, 2015, **Miles G. Batt, Sr.** was awarded the distinguished Lifetime Achievement Award from the Watercolor USA Honor Society in ceremonies at Springfield, Missouri.



Toska Courbron, "Selma Impressions"

Toska Courbron was awarded Best in Show for plein air oil painting "Selma Impressions"; First Place for watercolor "Pulling for the Parade"; and honorable mention for watercolor "Rainy Day Walk" at the Selma Art Guild Summer Juried Art Exhibition. She is also the Artist of the Month at the Selma Art Guild Gallery, featuring 32 paintings during the Month of July. Paintings are watercolor, oil, and pastel.

Rosie Coleman's painting "She Has Attitude" won the Bronze Award in the Tallahassee Watercolor Society's

Tri-State Watermedia Exhibition earlier this year. Nicholas Simmons served as the juror.

Jackie Dorsey's painting "Aspen Bridge" was accepted in the International Watermedia 2015 Exhibition in Colorado Springs, CO.



Jackie Dorsey, "Aspen Bridge"

Barbara Edward's painting "Cow Pastures" received best in show in The World of Art 2015 Juried show at the South Cobb Arts Alliance, Mableton, Georgia. "Finches Territory" has been accepted in the Adirondacks National Exhibition of American Watercolors, The View, Old Forge, New York August 7th through October 4th, 2015. "American Glories" and "A Safe Resting Place" have been accepted in The Fourth Virginia Avery Reflections Juried Art Exhibit to be held from August 20 to October 10, 2015 at The Quinlan Visual Arts Center, Gainesville, GA.



**Rosie Coleman
"She Has Attitude"**



**Barbara Edwards
"Goldfinch Territory"**



Sally Evans, "Lenox at Peachtree"

Sally Evans had several paintings included in the 2015 Cumming First United Methodist Church Festival of Arts, one of which, 'Lenox at Peachtree' acrylic on canvas, was purchased by the Church to be part of their ongoing Art Collection.

Women of Watercolor presented "Brush Strokes," featuring 53 watercolors by eight artists. The exhibit hung in the auditorium of the Oconee County Library in Watkinsville, GA for the month of July. Artists included GWS members **Suzanne Hicks** and **Janet Rodekohr**.



Marion Hylton
"Buying Locally"

Last month, in the Tallahassee Watercolor Society's Tri-State Watermedia Exhibition, **Marion Hylton** won an Award of Excellence for "Buying Locally".

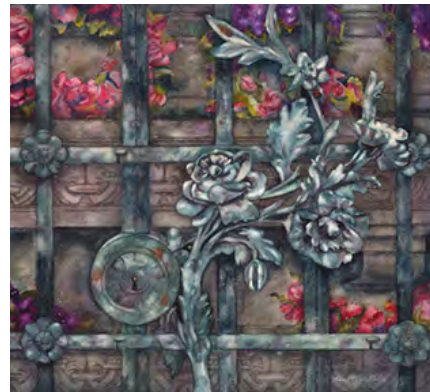
The watercolor paintings of **Kie Johnson's** exhibition, "Nature Provides", explore the natural world that sustains life on Earth. Integrating her painting subjects with the gifts provided by



Kie Johnson
"Sun Lover"

nature she shares her deep appreciation for the wisdom found in our natural world. Show dates are October 9 to November 13 at the Oconee Cultural Arts Foundation in Watkinsville, GA. Opening reception is 6-9:00 pm on October 9. Kie's painting "A Good Foundation" was also accepted in the International Watermedia 2015 Exhibition in Colorado Springs, CO.

Kim Minichiello GWS, will exhibit "Paris Passy Gate" at the Pennsylvania Watercolor Society's International Exhibition, Sept. 9 to Nov. 13 at The Carlisle Learning Arts Center, Carlisle, PA. With this acceptance she will also be a signature member in PWS.



Kim Minichiello, "Paris Passy Gate"

Michael B. Pearson was accepted into the Biennale National Juried Exhibition on Hilton Head in May.

"First Light" by **Darlene Pilcher**, won First Place at the Ashburn Fire Ant Festival Art Competition, earlier this year. To see more of her works, go to www.darlenepilcher.com.



Darlene Pilcher, "First Light"

Sue Pink NWS, GWS, won 'Best of Show' for her painting "Shark Valley Raven" at the Texas Watercolor Society's 66th Annual National Exhibition held at the Radius Center in San Antonio, Texas from April 13 to May 29, 2015. Sue was also the recipient of Southern Watercolor Society's 'Gallery Street Award' for her



Sue Pink, "Shark Valley Raven"

painting “Nesting” held at the Customs House Museum in Clarksville, TN. The Tallahassee Watercolor Society awarded Sue an ‘Award of Merit’ in their 27th Tri-State Juried Watermedia Exhibition for her painting “8 De Novo”.



Mary Louise Ringers, “Going Nuts”

Mary Louise Ringers has been accepted into the Florida Watercolor Society’s 44th Annual Exhibition with her painting titled “Going Nuts”. The exhibition will be held at the Leepa Rattner Museum of Fine Art in Tarpon Springs, FL from September 6 to November 1, 2015. This painting also won Third Place in the Florida Sun-coast Watercolor Society’s Transparent Show juried by Dean Mitchell.

Janet Rodekobr had two paintings included in the Madison Morgan Cultural Center spring show in Madison, Georgia. The juried show was open to members of the Madison Artists Guild, built around the theme of Home. It ran from Jan. 23 to May 3, 2015.



Janet Rodekobr, “Luke’s Bad Day”

F. Charles Sharpe attained signature status in the Transparent Watercolor Society of America with his watercolor entitled “Easy Clean-up”.

Mary O. Smith received an award in the Southern Watercolor Society National



*F. Charles Sharpe
“Easy Clean-up”*

show in Clarksville, Tenn. The painting “On the Blocks” also has won an Honorable Mention last year in the Tri-State Watercolor Show through the Tallahassee Watercolor Society in Tallahassee, FL.

Susan M. Stuller NWS TWSA GWS has won the Amy Freeman Lee Memorial Award with bronze medal in the 66th Annual Texas Watercolor Society Exhibition for her painting “The Window Washer”. She has had her painting “An Apple A Day” selected by North Light Books for Splash 17, this is her 5th time appearing in the Splash Series. She also has had paintings accepted into the Mid-Atlantic Juried Exhibition, The Virginia Watercolor Society and The Watercolor Society of Alabama.



Susan M. Stuller, “The Window Washer”

Don Taylor’s painting “Gators” won the Noel Quinn award (one of the top 3) in the NWS Members Show. His painting “Arches of Augsburg” won the J. Richeson award in the 66th TWS exhibit. He was awarded signature memberships in the Hudson Valley Art Association and in the Red River Watercolor Society. In the RRWS show, his painting “Calypso Rhythm” won the Golden Colors award. In the Green Mountain Watercolor Society annual exhibit, his painting “Ascension” won the Eleanor Ahern Award for the best use of color.

Ann Thompson, GWS, will have two mixed water media paintings, “Knockouts” and “Carnival” in the Fourth Annual Virginia Avery Memorial “Reflections” Juried Art Exhibit, sponsored by the Atlanta Branch of The National



*Mary O. Smith,
“On the Blocks”*

continued

League of American Pen Women. The exhibit, which features both two and three dimensional art by women who are residents of Georgia, will be at the Quinlan Visual Arts Center in Gainesville, Georgia from August 20th -October 10th. Ann's art is exhibited at several Georgia locations, including ArtWorks in Hiawassee, The City Hall in Clayton, and The Blue Ridge Arts Center in Blue Ridge. A winner of numerous local and national awards, her work has been featured in local and international publications.



Ann Thompson, "Carnival"



Brenda Turner, "A Dog's Life"

Savannah artist, **Brenda Turner**, received Best of Show with her acrylic painting, "A Dog's Life", at the 27th Tallahassee Watercolor Society's Tri-State Watermedia Exhibition, Juror Nicholas Simmons. Her other painting, "Cows of Color", was purchased from the show. "In Between Time", a large figurative acrylic painting, has been accepted into the 42nd Rocky Mountain National Watermedia Show,

Golden, Colorado, juror Mark Mehaffey. With this acceptance comes signature status for Brenda. This spring her paintings were accepted into the Rockies West National Show, (with an award), the GWS National Exhibition; the 45th International Watercolor Show, in New Orleans, La., Juror Chris Krupinski; and the 22nd National Watermedia Show in Moorhead, Minn.

Carol van Dyck has had her painting, "Pike Place Market" accepted in Kudzu Art Zone's 2015 Open Juried Exhibition. The show ran from June 5 to July 17 at their gallery, 116 Carlyle St, Norcross, Ga.



Deb Ward, "Fun With Marbles"

Deb Ward's (GWS) painting "Central Time" has been accepted into the Ohio Watercolor Show. This show will run from September 18 through October 24, 2015 at the Middletown Art Center, Middletown, Ohio. Deb's painting "Fun With Marbles" has been accepted into the Pennsylvania Watercolor Society 36th International Juried Exhibition in Carlisle, PA, September 25, 2015 through November 13, 2015. Two of Deb's watercolor paintings — "Luscious" and "Peppermint Stripes" — were accepted into the Hoosier Salon Annual Juried Exhibit, at the Eugene and Marilyn Glick Indiana History Center, Indianapolis, IN.

Carolyn J. Wilder's watercolor "Winter Fishing Party" was juried into the National Watercolor Society 2015 All Member Exhibition by juror Carol



Carolyn Wilder, "Winter Fishing Party"

Carter. The exhibit runs from June 6 to July 31st, at the NWS Gallery, 915 S. Pacific, San Pedro, CA.



Carol van Dyck, "Pike Place Market"

continued



Member Workshops



Pat Fiorello, "Villa at Vagliagli"

Past GWS President & Signature Member, **Pat Fiorello** will be teaching painting workshops in Spain, May 9-16, 2016 and Tuscany, September 24 – October 1, 2016. For more information contact Pat at 404-531-4160 or patfiorello@aol.com.

Join GWS Past President, **Kathy Rennell Forbes** for watercolor journaling in Tuscany and Le Marche, Italy with international nonprofit, Go Eat Give. Soak in and paint picturesque scenery, farm life and historic villages. Be inspired to capture rolling hills, medieval buildings, and olive harvests in your watercolor travel journal and photos. Receive individual art instruction, taste authentic food, meet local artists, and volunteer at the farm October 31 – November 7, 2015. For more details: <https://www.goatgive.com/trips/art-tour-of-italy/>



Kathy Rennell Forbes in Cuba

UPCOMING EXHIBITIONS 2015-2017

2015 MEMBER EXHIBITION

ART Station

Historic Stone Mountain Village, GA

Juror, Judge, Workshop Leader: Frank Francese

Show Dates: October 3 – November 7

Workshop: October 19 – 23

2016 37TH NATIONAL EXHIBITION

Bowen Center for the Arts

Dawsonville, GA

Juror, Judge, Workshop Leader: Don Andrews

Show Dates: March 15 – April 30

Workshop: March 15 – 18

2016 MEMBER EXHIBITION

The Rectory

Norcross, GA

Juror, Judge, Workshop Leader: Ann Abgott

Show Dates: October 1 – November 12

Tentative Workshop Dates: September 27 – 30

2017 SIGNATURE EXHIBITION

Bowen Center for the Arts

Dawsonville, GA

Show Dates: January 12 – February 24

2017 38TH NATIONAL EXHIBITION

Rousch Family Gallery

Carrollton, GA

Juror, Judge, Workshop Leader: Fealing Lin

Show Dates: March 11 – April 29

Workshop: March 7 – 10

2017 MEMBER EXHIBITION

RQuinlan Art Center

Gainesville, GA

Juror, Judge, Workshop Leader: Jeannie McGuire

Show Dates: August 17 – October 7

Workshop Dates: August 14 – 18

GWS BOARD MEMBERS 2015-2016

President:
Rosie Coleman
 Athens, GA
 706-613-1569
lepeep@bellsouth.net

First Vice President:
Frances Wilson
 Mableton, GA
 770-944-6804
wilson7737@aol.com

Second Vice President
National Exhibition Co-Chair:
Kie Johnson
 Watkinsville, GA
 706-540-4025
ekiejohnson@gmail.com

Second Vice President
National Exhibition Co-Chair:
Gail Watson
 Toccoa, GA
 706-886-3726
gailwatsonart@gmail.com

National Exhibition Entry Chair:
Tracy Hunt
 Cairo, GA
 850-728-9068
tracy.railroadartist@gmail.com

Member Exhibition Co-Chair:
Frances Wilson
 Mableton, GA
 770-944-6804
wilson7737@aol.com

Member Exhibition Co-Chair:
Betty Derrick
 Atlanta, GA
 404-256-1998
bderrick@agnesscott.edu

Members Exhibition Entry Chair:
Marian O'Shaughnessy
 Atlanta, GA
 507-250-4455
marian@watercolorsbymarian.com

Signature Exhibition Chair:
 Vacant, next show 2017

Treasurer:
Ken Weaver
 Peachtree City, GA
 770-487-9858
kenandmaryweaver@yahoo.com

Recording Secretary:
Jackie Dorsey
 Athens, GA
 352-514-3800
dorseyjohnson@gmail.com
jackiedorseyart.com

Membership and Communications Chair:
Sally Evans
 Alpharetta, GA
 770-888-8144
evanss24@mac.com

Community Outreach Chair:
Anne Brodie Hill
 Gainesville, GA
 770-886-6126
annehill@aol.com

Demonstration Chair:
Sam Alexander
 Atlanta, GA
 770-668-0006
alexander.sam80@yahoo.com

Newsletter Editor:
Rosemary Segreti
 Athens, GA
 706-613-1569
rsegreti@bellsouth.net

Parliamentarian:
Daryl R. Nicholson
 Atlanta, GA
 404-664-6741
daryl Nicholson@me.com

Publicity Chair:
Lauren Mohundro
 Powder Springs, GA
 770-419-0018
lmohundro@comcast.net

Sponsorship Chair:
Viviane Van Giesen
 Watkinsville, GA
 706-255-4019
vangiesen12@me.com

Historian:
Kathy A. Kitz
 Lawrenceville, GA
 770-263-7832
kathykitz@aol.com

Webmaster:
Ankur Mishra
 Milton, GA
 678-907-2666
ankurbhaskar@gmail.com



APPLICATION FOR MEMBERSHIP

Register for GWS membership! Please make check payable to Georgia Watercolor Society (or GWS) and mail to Membership Chair:

Sally Evans 1455 Caribou Way, Alpharetta, GA 30005 Email: evanss24@mac.com

Member Name _____

Address _____

City _____ State _____ Zip _____

Phone _____ Email _____

Student <input type="checkbox"/> \$20	New or Renewal <input type="checkbox"/> \$40	Family <input type="checkbox"/> \$60	International <input type="checkbox"/> \$60	Patron <input type="checkbox"/> \$100	Lifetime <input type="checkbox"/> \$350	Lifetime Family <input type="checkbox"/> \$450	Benefactor <input type="checkbox"/> \$1500
--	---	---	--	--	--	---	---

I want to volunteer for GWS activities, expand my knowledge of watercolor and develop friendships with other watercolor artists .

Consider me for a Board position.

