



FROM THE PRESIDENT

Happy New Year! We greet 2015 enthusiastically and eagerly! The Signature Member Exhibition has already opened at Oglethorpe University Museum of Art (OUMA)

in Atlanta. Please take the time to visit this exhibit as it represents the best of our organization. Sincere thanks to Maureen Kerstein for organizing the event and to all the participating Signature members!

Immediately following the Signature Member Exhibition is the National Exhibition, also at OUMA. Acclaimed watercolor artist, Iain Stewart, is our juror, judge and workshop host. Board members Sam Alexander, Judy Greenberg and Rosie Coleman are working diligently in preparation for this prestigious National Exhibition. Please mark your calendars: The opening reception is Friday, March 13, from 4:00 - 7:00 p.m. and the show remains open until April 30. Mr. Stewart's workshop will be held in the gallery of OUMA from April 6 to 10.

Additionally, our Annual Meeting will be held at OUMA on April 8, beginning at 6:00 p.m. with a painting demonstration by Iain Stewart immediately following from 7:00 to 8:30 p.m. We will finish off this significant evening with

the awards presentation and a reception hosted by OUMA. I encourage each of you to attend on April 8, 2015, to witness first-hand how GWS has been transformed and is flourishing.

Some brief updates:

- It is time to renew your GWS membership. Please fill out the form in this newsletter or on the website under the tab 'Get Involved'.
- We have a continuing problem where a few members arrive at shows with unacceptably framed or matted artwork. This places the show Chair in the awkward position of policing entries as they arrive. If you need to familiarize yourself with the framing rules please look under FAQs on the website, and/or read Jane Springfield's article "Know Your Submission Rules" in this newsletter. Thank you in advance for your cooperation.
- The watercolor demonstrations at the High Museum of Art in November and December were a great success. Many thanks to those who participated! It was an honor to have had this opportunity and we hope for future partnerships with the High Museum.

continued

IN THIS ISSUE

Page 1	From the President	Page 5	Denise Athanas Demo and Art Swap
Page 2	From the Editor	Page 5	Thanks for Opening Your Palette
Page 2	Renew Today!	Page 6	Every Artist Has a Story
Page 3	An Eclectic Signature Exhibition		Denise Athanas
Page 4	XXXVI National Exhibition	Page 7	Know Your Submission Rules
Page 4	Iain Stewart – From Sketchbook to Studio	Page 7	All About Our Members
Page 5	XXXVI National Exhibition Timeline	Page 8	Member News
		Page 10	Upcoming Exhibitions
		Page 11	Officers and Board Members



Detail from "Moonlight Nocturne III"

A very happy and refreshed New Year to you!

The Signature Exhibition is now available for your viewing pleasure. Congratulations Signature members for a beautiful show. You motivate those of us not yet there. The Oglethorpe University venue for both exhibitions is well worth the visit.

Please see all the details of the upcoming National Exhibition in this issue. If you are looking to achieve a more painterly outcome and would like to study with a master of preserving light there is still room in the upcoming workshop with Iain Stewart.

For those of you checking up on me from last time I did manage to paint. Besides having a blast with trying all types of paper, I even resurrected a few specimens from the "rejection bin".

Spring is just around the corner. We are gathering news for the Spring 2015 issue to be published in early May. The deadline for Member News is April 10, 2015. Put Member News in the subject line. Rosie Coleman is the assistant editor for this section. Please help her out by following the Member News Guidelines printed in each newsletter. Please note her email and home address: Rosie Coleman – lepeep@bellsouth.net; 706-613-1569; 149 Falling Shoals Drive, Athens, GA 30605.

I encourage all members to send suggestions and ideas for your newsletter to me at rsegreti@bellsouth.net.

Stroke on!

Rosemary

- When I took office last June, we had 260 "Likes" on our Facebook page; **today we have passed 400 Likes!** Thank you for continuing to connect with other GWS members online. I know there are members who find it difficult to navigate the internet but I urge you to continue your efforts. The future success of GWS is tied to our ability to leverage the important tools the internet provides. If you have not already done so, please update your profile on the GWS website and "Like" our FB page.

Website: www.georgiawatercolorsociety.com

Facebook: www.facebook.com/pages/Georgia-Watercolor-Society/262267572141

We have almost finished filling board positions for the year beginning June 1, 2015. Thank you, volunteers! You can contact me to find out what positions remain open and what each responsibility entails. Please consider giving back! Remember "IF NOT YOU, THEN WHO?"

With gratitude,

Daryl R. Nicholson

404-664-6741

darylnicholson@me.com

www.darylnicholson.com

REMINDER: Renew Today!

Haven't renewed your membership? It just takes a few minutes.

I know that the majority of our members have renewed their membership for 2015; however, there are still some who have not yet done so, and I gently remind you to send your annual membership fee of \$40 to Sally Evans, Membership Chair, 1455 Caribou Way, Alpharetta, GA 30009.

Remember that to maintain points toward Signature status or to maintain Signature status, members must keep their membership current. Some people find it easier to become Lifetime members with a single payment of \$350.

— *Sally Evans, Membership and Communications Chair*

Now Available! Join or Renew your GWS membership via PayPal online. Check our website under the tab "Get Involved."

QUOTE TO PAINT BY:

[Playing]...is the place where we allow ourselves to experiment and explore, getting to know our medium and subject, without judgment. Take that childlike innocence by the hand gently and coax it out softly for it alone holds the power of the artist in you.

— Jeanne Carbonetti





Betsy Cozine, "Beauty of Gibbs Garden"



John E. James, "There's a Lot Going On"

The 2015 Signature Exhibition at Oglethorpe Museum is a great success! Opening night was a festive affair as 53 artists showed some of their best work. Oglethorpe treated us all to gorgeous flower arrangements and a delicious display of southern-themed hors d'oeuvres and desserts. Everyone had a great evening enjoying the art and socializing with other GWS artists and visitors. The judge was Ginia Sweeney, Coordinator of Museum Interpretation at the High Museum of Art. Congratulations to the award winners.

— *Maureen Kerstein, Signature Show Chair*

1st Place - Betsy Cozine: "Beauty of Gibbs Garden"

2nd Place - John E. James: "There's a Lot Going On."

3rd Place - David McCully: "Backstreet View"

Honorable Mention - Sam Alexander: "Modica Market Morning"

Honorable Mention - Rosie Coleman: "In The Shadow"

Honorable Mention - Daryl R. Nicholson: "First Catch"



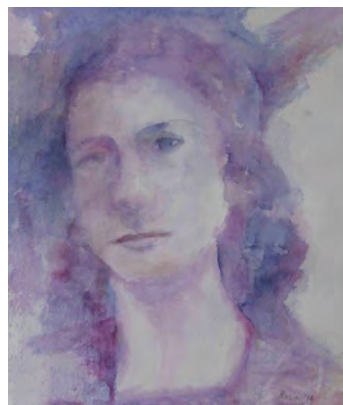
*David McCully
"Backstreet View"*



*Daryl R. Nicholson
"First Catch"*



*Sam Alexander
"Modica Market Morning"*



*Rosie Coleman
"In the Shadow"*

XXXVI National Exhibition

Oglethorpe University Museum of Art
March 14 - April 30, 2015
Opening Reception
March 13, 4:00 - 7:00 p.m.

The Georgia Watercolor Society will have members taking part in OUMA's Wednesday night lecture series, in addition to our juror, Iain Stewart. Look for email announcements from Sally Evans, our Communications Officer, for the current opportunities.

Our workshop, April 6 -10, from 9:00 a.m. - 4:00 p.m. will take place at OUMA surrounded by our National Exhibition. Iain Stewart will be our instructor. Contact: Daryl Nicholson at darylnicholson@me.com.

Following the Annual Meeting on April 8, 2015 at 6:00pm, there will be a demonstration by Iain Stewart, 7:00 - 8:30 p.m. This will be followed by the awards reception. All events will be in the Rubin gallery.

So there you have it — an inspiration packed few months. We hope to see you there.

— *Judy Greenberg, National Show Chair*



Iain Stewart
**"the-tourist-
oppde-le-vieux-
Provence"**

From Sketchbook to Studio

Painting Light in Watercolor

Iain Stewart, NWS

April 6 - 10, 2015, 9:00 a.m. - 4:00 p.m.



Our National Exhibition will be a big part of the events taking place at Oglethorpe University Museum of Art (OUMA). The viewing audience is expected to be one of the largest we have had. How fortunate we are to have OUMA as our host, and to have Iain Stewart as our juror and demonstrator.

Iain Stewart is a watercolor artist/illustrator and a signature member of the National Watercolor Society. His work has received numerous awards in International competition and he is a sought after juror and work-shop instructor.

When you see his work, you can't help but be taken aback by the luminosity and simplicity of his style. How does he do it? Perhaps his artist's statement tells it all:

"I rely on instinct a great deal and endeavor not to imbue any false grandeur to the choices I make when working. The lion's share of my work is done alla prima as my real struggle in painting is to capture the initial vision for any given piece. I am most often motivated by capturing a definitive lighting shape and value rather than faithfully representing the subject as witnessed. Watercolor is uniquely suited for this task as "light" is reserved from the first brush strokes and must be protected throughout the painting process.

I often use remembered atmospheric and lighting conditions in my work and would say that I paint from life and memory simultaneously. My watercolors are not only a translation of what I see, but more importantly, an expression of how I choose to view the world."

We have an opportunity to learn from such a master with a 5-day workshop, April 6 - 10. The class is filling, so please contact Daryl Nicholson to enroll. Iain will also be demonstrating on April 8th at 7 p.m. prior to our awards reception.

Please enjoy meeting him and taking part in at least one of these chances to observe a master painter.

XXXVI National Exhibition TIMELINE

FEB. 23 - 27	Shipped Work Arrives
MARCH 4	Hand deliver to OUMA
MARCH 13	4:00 - 7:00 p.m.: Opening Reception
MARCH 14	Exhibition Opens
APRIL 6 - 10	Iain Stewart Workshop at OUMA
APRIL 8	6:00 p.m.: Annual Meeting 7:00 - 8:30 p.m.: Iain Stewart Demonstration
APRIL 30	8:30 p.m.: Awards Reception Exhibition Closes
MAY 2	11:00 a.m. - 2:00 p.m.: Removal of Artwork from OUMA

Thanks for Opening Your Palette!

Many thanks to these volunteers who demonstrated at the High Museum of Art in November and December during the CÉZANNE AND THE MODERN Exhibition. Your enthusiasm was most appreciated and your action displayed a genuine connection to the GWS mission.

Durinda Cheek

Richard Diedrich

Kathy Rennell Forbes

Anne Brodie Hill

Kathy Kitz

Daryl R. Nicholson

Marian O'Shaughnessy

James Taylor



Curious Crowd with Richard Diedrich

DEMO & ART SWAP

Saturday, March 21, 2015

1:00 p.m.

BINDERS ART SUPPLIES

**3330 Piedmont Rd NE #18
Atlanta, GA 30305
404-237-6331**



Don't miss the opportunity to see a demo by the award winning abstract artist Denise Athanas. A 2014 Artist's Magazine's Annual Art Competition Finalist and one who holds Signature status in over a

dozen watermedia societies, Denise will share how she goes about creating an abstract painting and will explore different techniques with acrylic on paper. Be sure to read the interview with Denise also in this issue.

Join our Art Swap that day. Please bring something from your studio, new or gently used items, books, videos, supplies, tools, to offer in exchange for another. No money is involved. It's a great way to get something you may need and to pass on to other artists what you do not need.

Guests are welcome to attend (for a minimal \$5 fee) and they may join in the Art Swap if they bring some art supplies to trade. Light refreshments and beverages are served at the meeting.

Don't forget, Binders is offering a 10% discount on all items sold in the store to those present for our meeting — discount is good March 21 only. We hope you join us. You won't want to miss this special art event!

— Kie Johnson, Demonstration Chair

QUOTE TO PAINT BY:

Paint Happy!

— Lian Quan Zhen



EVERY *Artist* HAS A STORY

AN INTERVIEW WITH DENISE ATHANAS BY KIE JOHNSON



Tell us something about your journey as an artist

My journey as an artist really started years and years ago when I joined a painting class in Syracuse, NY. My boys were young and of course my painting time was limited, but my passion for painting was such that somehow I fit painting into my daily schedule.

Who has influenced you in your pursuit of art?

I am primarily self-taught but I attended — and still do — workshops and master classes by internationally recognized artists some of whom I have come to regard as mentors and a source of inspiration.

What is the source of inspiration for your artworks?

I cannot pinpoint what inspires my art. I just have the need to paint! I love to dip my brush in the paint and just move it around and then before you know it, I just take off!!

What are your goals in your art career?

My goal is to keep painting until I cannot anymore! Even though you reach a certain level you still aspire to grow

and become better. This is my goal. There is no end to learning and improving. There is no end to the journey of the art.

What advice do you have for emerging artists?

As for advice for emerging artists, I say, paint...paint... paint...PAINT and when you are ready, enter regional and then national and international exhibitions. Competition and participation is part of growing as an artist.

Are you currently exhibiting and or teaching workshops and if so where?

I enter many national shows and teach private workshops in my studio.

What do you consider your most significant accomplishment as an artist?

My most significant accomplishment as an artist for me came when I put the AWS, NWS after my name.



"Moonlight Nocturne III"

QUOTE TO PAINT BY:

Work hard, paint often, and have faith in yourself... Have plenty of paper.

— Pat Dews

Know Your Submission Rules

GWS Board clarifies (submission) requirements for exhibitions.

This year your Georgia Watercolor Society Board of Directors defined and simplified submission requirements for all GWS exhibitions. According to the GWS bylaws the GWS Board of Directors votes on any changes to submission requirements for exhibitions.

On June 7, 2014 the Board voted to have the same requirements for all future GWS exhibitions. Submission rules were fine-tuned at Board meetings on August 23 and December 6, 2014.

- The following watermedia are allowed: watercolor, acrylic, casein, gouache and egg tempera. Oil paints including water-soluble oil paints are not allowed.
- Batik and other processes that use wax masking are not allowed.
- The following grounds are permitted: paper, Yupo, watercolor canvas, Claybord and Aquabord.
- Mats are to be white or off white.
- Work must be framed unless done on a cradled surface such as Claybord. Frames are to be wood or metal in gold, silver, black, brown or natural wood tones and are to be unadorned and uncarved.
- When glazed, only plexiglass is permitted; no glass. Paintings may also be varnished or waxed.
- Collage elements must be original watercolor only.
- Maximum frame size cannot exceed 48" in either direction. Minimum image size is 8x10.
- Work must have wire in place for hanging.
- Classroom work or work done in a workshop is not permitted.
- Work must be less than two years old. No work that has been accepted in any GWS exhibition can be submitted for another GWS show.
- Work must be the same as was submitted. If work differs from the submitted JPG it will be excluded from the show.

What does this mean?

Any artist who is accepted into a GWS exhibition and who fails to deliver the accepted painting cannot enter a GWS exhibition for two years.

Any work that is framed or shipped improperly will be rejected and the artist may not enter a GWS show for two years.

— Jane Springfield, Recording Secretary

All About Our Members

GWS membership is currently at 496 members. The Board works hard every day to make sure members have opportunities to share and seek inspiration by organizing events and exhibitions.

Thank you for supporting this endeavor.

Membership at a glance:

91 Life Signature Members
21 Life Exhibitors
17 Life Associates
1 Life Family
136 Signature
63 Exhibitors
90 Associates
2 Family
30 Honorary
47 Students

Welcome New Members

Susan Abell, Athens, GA
John Anderson, Hendersonville, NC
Nancy Brown, Baltimore, MD
Janice Cannon Smith, Marietta, GA
Susan Dawood, Jacksonville, FL
Joan DiLaura, Montgomery, AL
Marilyn Johansen, Pompano Beach FL
Ankur Mishra, Milton GA
Victor and Jane Nassar, Atlanta GA
Mary Spellings, Mercer, TN
Zan Thompson, Macon, GA
Vicki Tucker, Cordele, GA

Signature Patron

Rosemary Nothwanger

QUOTE TO PAINT BY:

Be willing to laugh at yourself
along the journey.

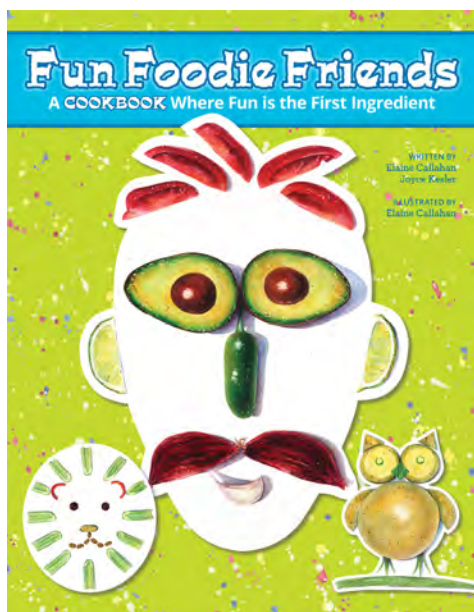
— Karylyn Holman



Member

NEWS

The 100th birthday of GWS Signature Member **Jim Brower** was celebrated December 30, 2014 by more than 70 of his family and artist friends at a party in his residence in Toledo, Ohio. Jim is a former GWS Gold Medal winner.



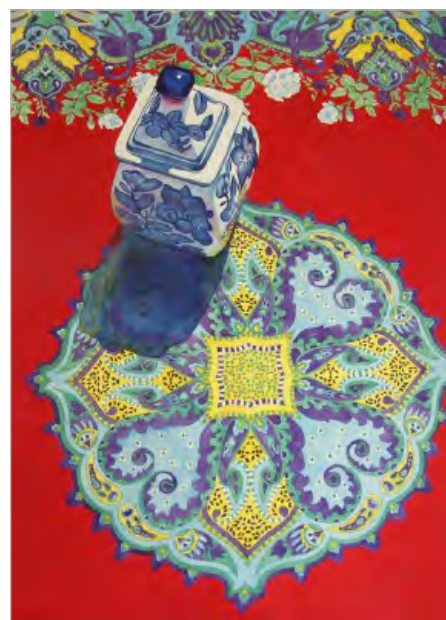
Elaine Callahan, “*Fun Foodie Friends*” cover

Elaine Callahan has combined her graphic design experience, with her fine art and love of food, to create a cookbook for Kid Chefs called *Fun Foodie Friends, A Cookbook Where Fun is the First Ingredient*. Each recipe has a whimsical food-based character that showcases the fruits and vegetables in each ingredient list. It was coauthored by Joyce Kesler and is now available on Amazon.



Kim Minichiello
“*Star Struck*”

Kim Minichiello's painting “Star Struck” has been accepted into the Women Painters of the Southeast Annual Juried Exhibition. The exhibit will be on view at the Blue Ridge Arts Association, 420 West Main Street, Blue Ridge, GA, from April 3 through May 1, 2015.



Deb Ward, “*Red Paisley Scarf*”

Deb Ward (Signature Member) has two paintings (“Red Paisley Scarf” and “Flights of Fancy”) published in the book *Artistic Touch 6*. She also received Signature memberships in the Watercolor Society of Indiana and the Pennsylvania Watercolor Society this past fall.

QUOTE TO PAINT BY:

Watercolor continues to be an often maddening challenge...so try not to become too discouraged; we're all in the same boat.

— Charles Reid



Member Workshops

Kim Minichiello will be teaching a 2-day workshop February 7-8 at the Winter Garden Art Association in Winter Garden, Florida, covering the techniques for the painting *Star Struck* (see Member News, page 8). For more information, <http://www.kimminichiello.com/Workshops.html>.

Alex Powers' Weekly Myrtle Beach Art Museum Class "Critique and PowerPoint Programs" at 3200 South Ocean Blvd, Myrtle Beach, SC. Critiques lead to lessons that apply to all students. No painting in class; bring work from home. Wednesdays 1 - 3:30 p.m.; \$20. Contact Alex at 843-742-4061. AlxPwrs@yahoo.com, www.AlexPowersArt.com.

GWS Plein Air Painting — I would like to get a group together to start venturing out to paint or sketch as soon as the weather allows. If you are interested, please contact me. **Maureen Kerstein** artbymaureen3@gmail.com 912-695-4804.



Pat Fiorello's Giverny Class

Past GWS President & Signature Member, **Pat Fiorello** will be teaching a painting workshop at Monet's Garden in Giverny France, June 4 - 11, 2015. She is also offering a workshop at Lake Garda in Northern Italy, September 24 - October 1, 2015. For more information or to be included on her newsletter with upcoming workshop information, please, contact Pat patfiorello@aol.com or 404-531-4160 or see www.patfiorello.com.

Watercolor Portrait Workshop with **Jane Angelhart**. May 12 - 15 at OCAF in Watkinsville, GA. Tuition \$385 for four days. Jane will teach how to develop a portrait from the development of the drawing, taking reference photos and application of glazes to gradually develop the image and background. A portion of the class will be dedicated to making watercolor sketches from a live model. The class is open to all skill levels. Please contact OCAF 706-769-4565 to register. You may visit Jane's website at www.angelhart-portraits.com.

PLEASE NOTE

Member News Guidelines

We try to print what you write, but we do condense lengthy entries. Please read the Member News and write your items in the same format. Use third person and be sure to have exact and complete information about the exhibition, correct title of venue, full name of organizations, name of award, dates of workshops etc. Double check your facts! Send text in Arial font, 12 type size. We do not include acceptances into and awards for GWS National or Members shows as there would be far too many to publish. We welcome jpegs of your work and include as many as we can in the newsletter.

SPECIAL NOTE: Please do not refer us to a website, press release or newsletter to get your news. We do not have time to track down information from those sources. **To emphasize: Write your news item in the Member News format you see in the newsletter.**

The deadline for the Spring 2015 GWS Newsletter Member News is April 10. The newsletter will be published by mid May. Please put GWS Member News in the subject line. If you have any questions about the format, send an email to: lepeep@bellsouth.net. **For those who mail items, send to Rosie Coleman, 149 Falling Shoals Dr., Athens, GA 30605.** Thanks!

— Rosemary Segreti, Editor, GWS Newsletter



UPCOMING EXHIBITIONS 2015-2016

2015 36TH NATIONAL EXHIBITION

Oglethorpe University Museum of Art, Atlanta, GA
Juror, Judge, Workshop Leader: Iain Stewart
Show Dates: March 14 – April 30
Workshop: April 6-10
Annual Meeting, Demo, Awards Reception: April 8

2016 37TH NATIONAL EXHIBITION

Bowen Center for the Arts
Dawsonville, GA
Juror, Judge, Workshop Leader: Don Andrews
Show Dates: March 15 - April 30
Workshop: March 15 - 18

2015 MEMBER EXHIBITION

ART Station
Historic Stone Mountain Village, GA
Juror, Judge, Workshop Leader: Frank Francese
Show Dates: October 3- November 7
Workshop: October 19-23

DETAILS FOR 2016 AND 2017 EXHIBITIONS ARE IN THE PROCESS OF BEING SCHEDULED.

APPLICATION FOR MEMBERSHIP

Register for GWS membership! Please make check payable to Georgia Watercolor Society (or GWS) and mail to Membership Chair:

Sally Evans
1455 Caribou Way, Alpharetta, GA 30005
Email: evanss24@mac.com

Member Name _____

Address _____

City _____ State _____ Zip _____

Phone _____ Email _____

- | | | | | | | | |
|--|---|---|--|--|--|---|---|
| Student
<input type="checkbox"/> \$20 | New or Renewal
<input type="checkbox"/> \$40 | Family
<input type="checkbox"/> \$60 | International
<input type="checkbox"/> \$60 | Patron
<input type="checkbox"/> \$100 | Lifetime
<input type="checkbox"/> \$350 | Lifetime Family
<input type="checkbox"/> \$450 | Benefactor
<input type="checkbox"/> \$1500 |
|--|---|---|--|--|--|---|---|

I want to volunteer for GWS activities, expand my knowledge of watercolor and develop friendships with other watercolor artists.

Consider me for a Board position.



GWS BOARD MEMBERS 2014-2015

Daryl Nicholson
President
1070 Arbor Trace
Atlanta, GA 30319
404-664-6741
darylnicholson@me.com

Beryl Angelus
First Vice President
1611 Nix Bridge Road
Dawsonville, GA 30534
770-713-5988
angels2bus@gmail.com

Sam Alexander
Second Vice President
National Show Chair
8235 Grogans Ferry Road
Atlanta, GA 30350
770-668-0006
alexander.sam80@yahoo.com

Judy Greenberg
Second Vice President
National Show Chair
2383 Little Brooke Drive
Dunwoody, GA 30338
770-392-9296
artcy-1@comcast.net

Rosie Coleman
National Show Entry Chair
149 Falling Shoals Drive
Athens, GA 30605
706-613-1569
lepeep@bellsouth.net

Frances Wilson
Member Exhibition Co-chair
1257 Grand View Drive
Mableton, GA 30126
770-944-6804
wilson7737@aol.com

Marian O'Shaughnessy
Members Exhibition Entry Chair
1922 Johnson Ferry Road. Apt. D
Atlanta, GA 30319
507-250-4455
marian@watercolorsbymarian.com

Maureen Kerstein
Signature Show Chair
2689 Tarpley Court NW
Kennesaw, GA 30152
912-727-3556
artbymaureen3@gmail.com

Ken Weaver
Treasurer
1202 Greers Trail
Peachtree City, GA 30269
770-487-9858
kenandmaryweaver@yahoo.com

Jane Springfield
Recording Secretary
2124 Meadowind Lane NE
Marietta, GA 30062
770-973-3381
jane@janespringfield.com

Sally Evans, Membership
Communications
1455 Caribou Way
Alpharetta, GA 30005
770-888-8144
evanss24@mac.com

Anne Brodie Hill
Community Outreach Chair
7720 Appaloosa Trail
Gainesville, GA 30506
770-886-6126
annehill@aol.com

Kie Johnson
Demonstration Chair
1121 Clairmont Place
Watkinsville, GA 30677
706-540-4025
ekiejohnson@gmail.com

Rosemary Segreti
Newsletter Editor
149 Falling Shoals Drive
Athens, GA 30605
706-613-1569
rsegreti@bellsouth.net

Lauren Mohundro
Parliamentarian
4616 Planters Hill Drive
Powder Springs, GA 30127
770-419-0018
lmohundro@comcast.net

Daniel Hope III
Publicity Chair
185 Riverhill Dr.
Athens, GA 30606
706-546-9889
dhopeiii@uga.edu

Viviane Van Giesen
Sponsorship Chair
1121 Brittain Estates Drive
Watkinsville Ga 30677
706-255-4019
vangiesen12@me.com

Kathy A. Kitz
Historian
1995 Fairway Close Trace
Lawrenceville, GA 30043
770-263-7832
kathykitz@aol.com

